

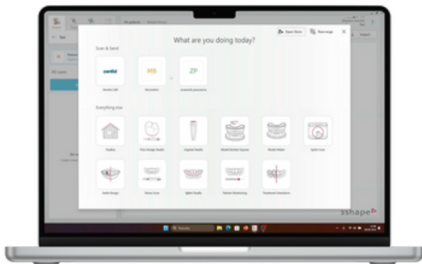
SmartFlag iOS Basics - Scanning Instructions

General rules for scanning the SmartFlags

1

Start by selecting "New Scan" in the patient's profile.

Next, choose the lab from the list to which you will send the scans once complete



2

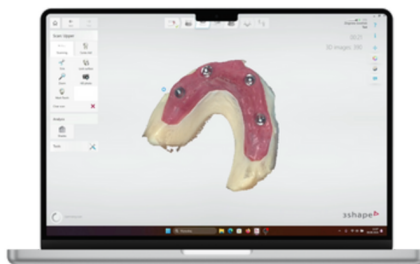
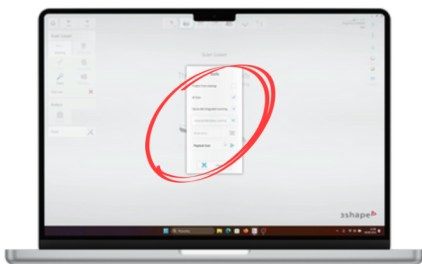
In the prosthetic planning tab, indicate the exact positions of the implants. Once completed, move on to the scanning stage.



3

If scanning an entirely edentulous jaws, select the appropriate scan preset from the tools.

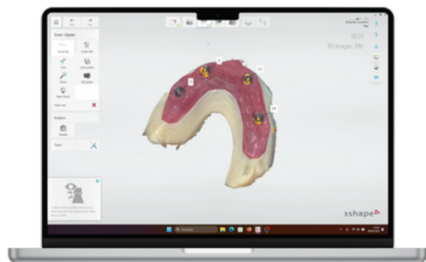
Begin by scanning the initial intraoral condition of the patient. For maxillary scans, capture as much of the palate as possible.



*All products names, logos, brand, trademarks and registered trademarks are property of their respective owners. All company, products and service names used in this library are for identification purposes only. Use of these names, trademarks and brands does not imply endorsement.

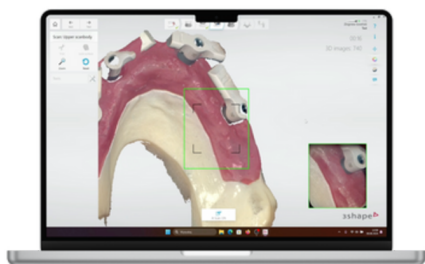
4

Once the initial scan is complete, mark the positions of the implants.
Then, proceed to scan the SmartFlags.



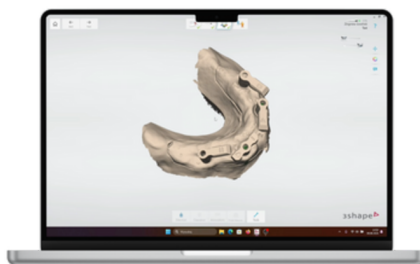
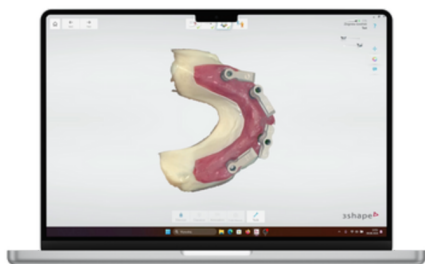
5

Position the SmartFlags following standard protocol.
Begin scanning at a reference point on the patient's appendix.
Once the scanner has located the reference point, proceed to scan the SmartFlag.



6

Ensure both the SmartFlag and part of the surrounding tissue are visible in the live view throughout the scan.
Avoid scanning for too long to prevent inaccuracies.
After completing the scan of the last SmartFlag, review the scans to ensure quality.



done.