

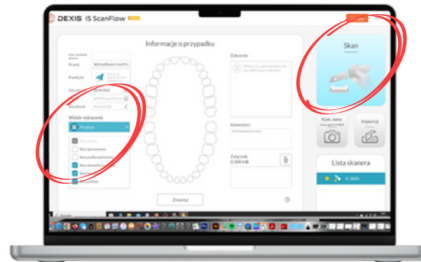
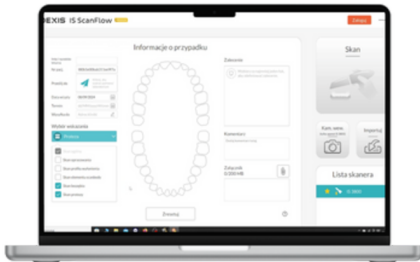
## SmartFlag iOS Basics - Scanning Instructions

# Using SmartFlags with a patient wearing a full denture

1

Select Denture Scanning and Add ScanBody Scanning

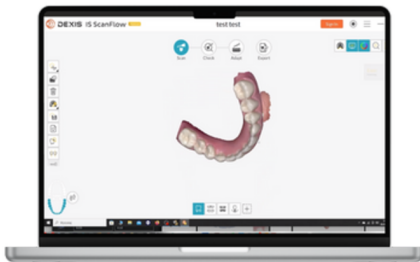
From the drop-down menu on the left, select denture scanning and add the stage for ScanBody scanning.



2

Proceed with the scan.

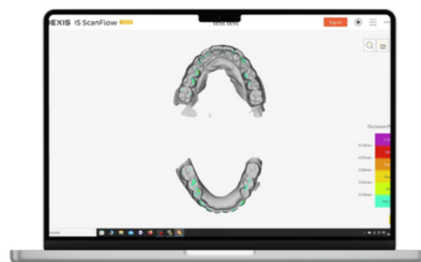
In the first stage, scan the initial situation of the patient. At this stage, scan the denture only from the tooth side.



3

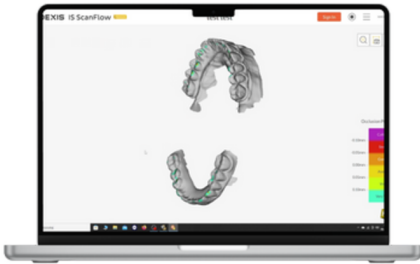
Perform the bite registration with the denture in place.

During bite registration, make sure to capture it in at least three different locations. After completing the registration, it is important to proceed to the verification stage to check if the program correctly recorded the patient's bite.



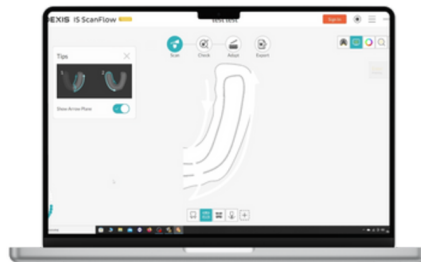
4

Use articulating paper to check if the occlusal map displayed in the program matches the one printed on the patient's occlusal plane.



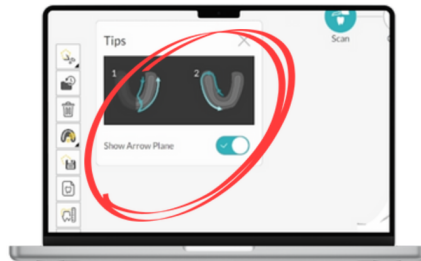
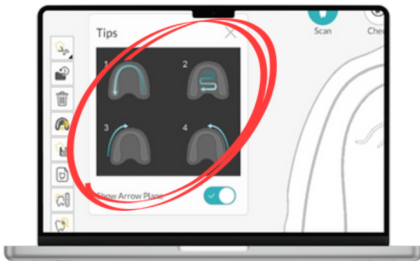
5

Proceed to the next stage, which is scanning the edentulous ridge.



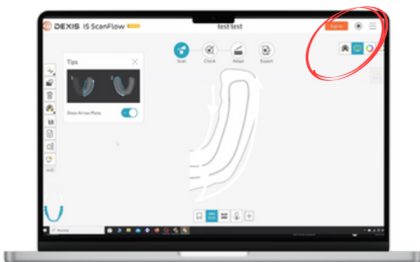
6

Pay attention to the hints given by the program and follow the displayed protocol for scanning.



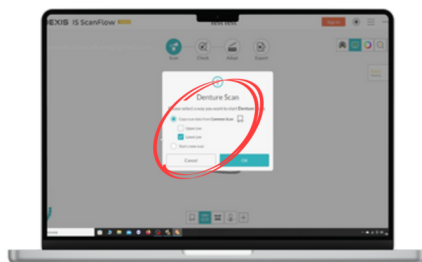
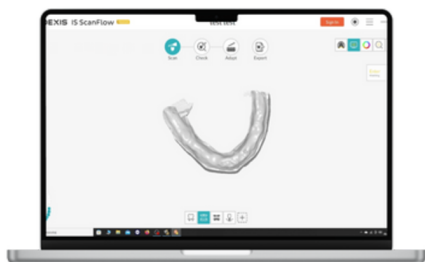
7

If you encounter difficulties scanning the soft tissue, try turning off artifact filtering in the top-right corner of the window.

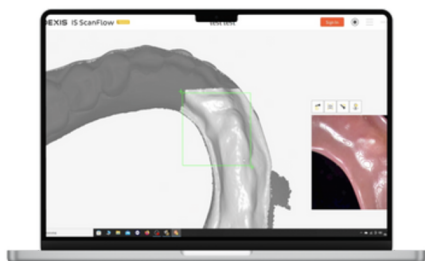


**8**

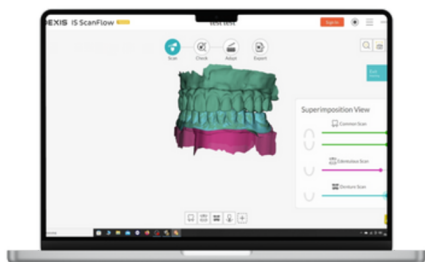
In the pop-up window, select the option to copy the previously scanned part of the denture.

**9**

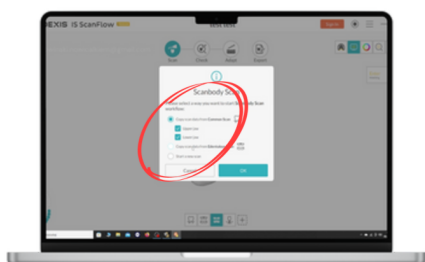
Scan the mucosal part of the denture.

**10**

To verify if the program can align all the stages, click the "Enter matching" button in the top-right corner.

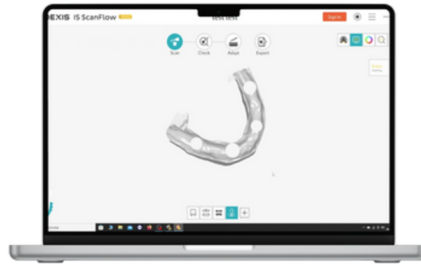
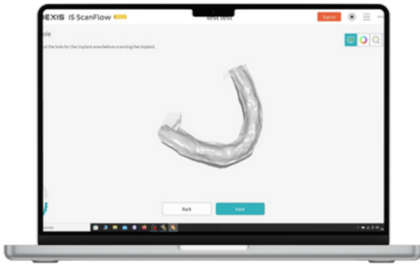
**11**

Proceed to the final step, which is scanning the smart flags. Copy the scan with the edentulous ridge for this stage.

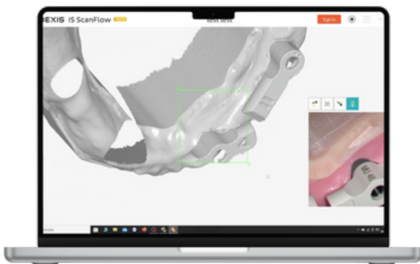


**12**

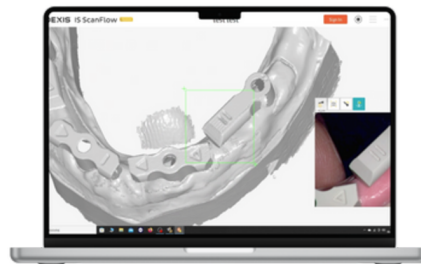
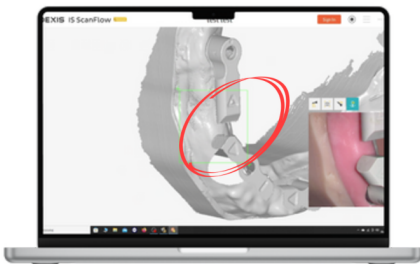
From the scan, cut out the areas where the implants are located to make space for the SmartFlags.

**13**

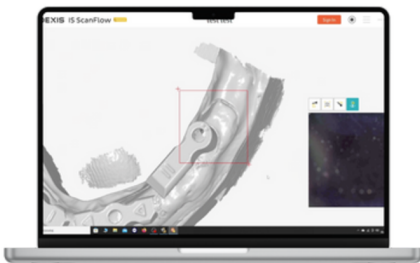
In the patient's mouth, attach the smart flags according to the all guidelines. Start scanning from a reference point on the patient's ridge.

**14**

Once the scanner recognizes this point and begins scanning the SmartFlags, ensure that from that moment on, they remain within the scanner's view.

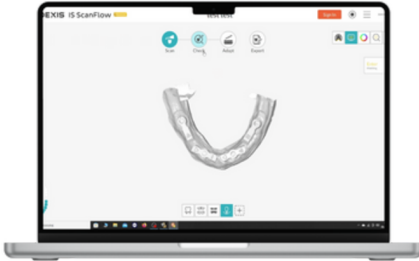
**15**

Scan the SmartFlags by positioning the scanner at a 45-degree angle to the flat surface of the flag.

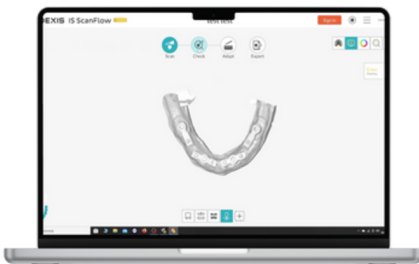


**16**

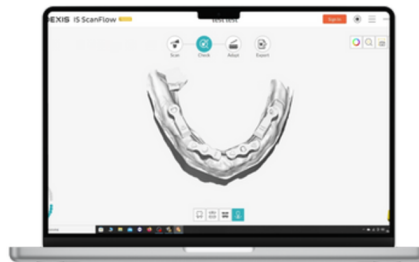
First, scan the entire lingual or palatal surface, then rotate the scanner to the buccal surface and scan it in one smooth motion, also at a 45-degree angle.

**17**

After completing the scan, assess whether all reference surfaces are visible and clear.

**18**

Proceed to the verification stage and check everything once more after recalculating the scans.



done.