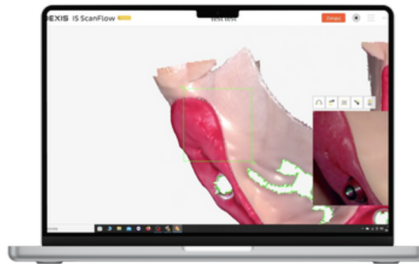
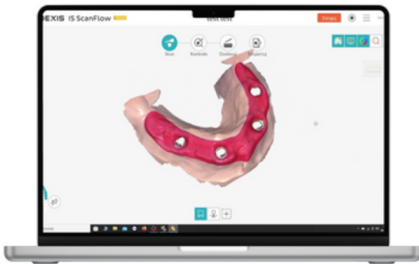


## SmartFlag iOS Basics - Scanning Instructions

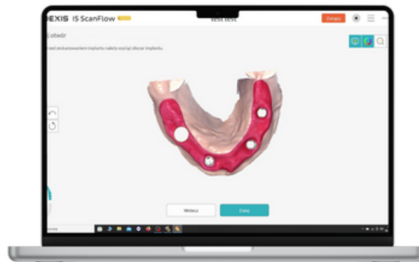
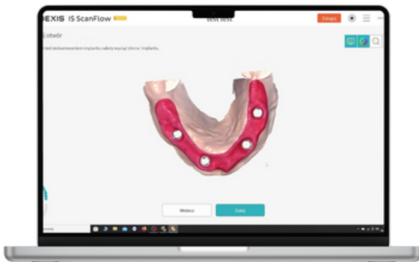
### General rules for scanning the SmartFlags

**1**

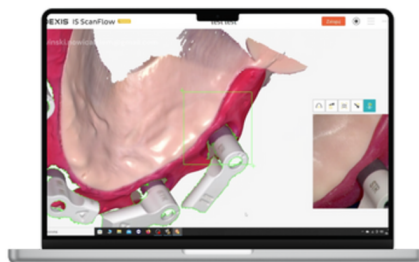
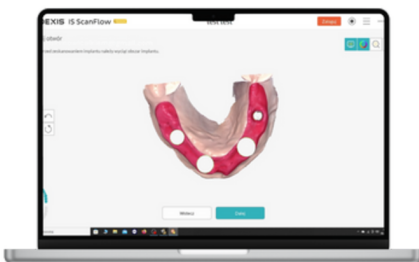
At the beginning, scan the initial situation of the patient.  
Make sure to scan as many reference points as possible.  
If it is the maxilla, also scan the palate.

**2**

After scanning the ridge, proceed to scan the implant positions.  
Remember to attach the smart flags correctly to the multi-units.

**3**

Cut the multi-units to create space in the scan for the smart flags.  
Start scanning the smart flags from a reference point.  
Once the scanner begins to scan the smart flags, try to keep them  
within the field of view at all times.



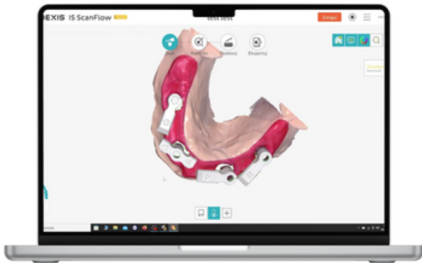
4

Make sure that when you finish scanning one smart flag, you already have the second smart flag in the scanner's view.



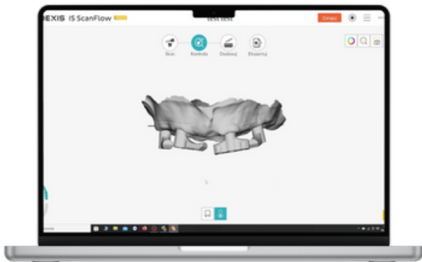
5

Check if all reference surfaces on the smart flag have been scanned. To better see if everything is correct, turn off the color.



6

After recalculating during the verification stage, check again if all the smart flags have been properly scanned and all reference surfaces are clearly visible.



done.