

SmartFlag iOS Basics - Scanning Instructions

Using SmartFlags with Patient wearing screw retained temporary bridge

1

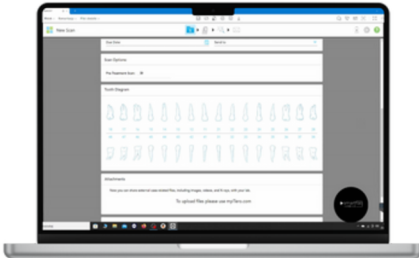
Fill out the prosthetic card by completing all the information required by the program.

In the 'order' field, select fixed restoration.

**2**

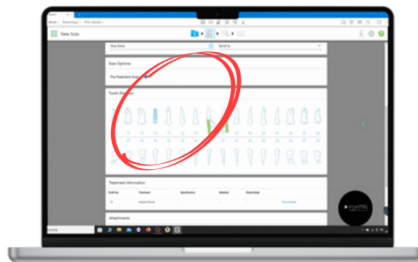
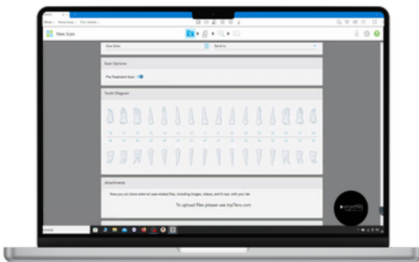
In the 'scanning options' field, select pre-treatment scan.

On the dental chart, mark only one tooth and select that it is an implant.

**3**

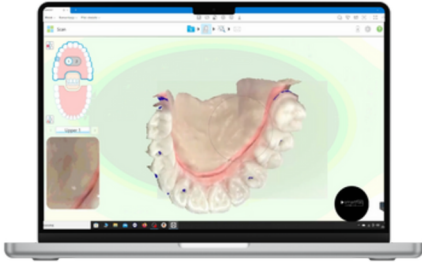
You may enter additional information about the implant manufacturer, but this is not necessary for the further scanning procedure.

It is important to mark only one implant regardless of the actual number, as this will allow all SmartFlags to be scanned as a single unit.



4

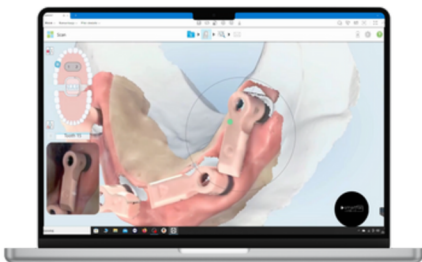
Scan the maxilla with the screwed-in temporary bridge, scan the mandible, and perform the bite registration. Unscrew the temporary bridge and scan the edentulous ridge of the patient.

**5**

In the patient's mouth, screw in the SmartFlags, following all applicable guidelines. If the patient has a significant amount of mobile tissue, disable the soft tissue removal option in the program.

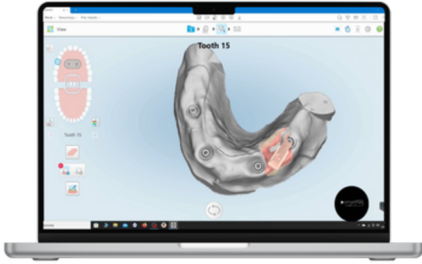
**6**

Start scanning the SmartFlags from a reference point on the patient's ridge. Scan the SmartFlags in one smooth motion, holding the scanner tip at a 45-degree angle to the flat surface of the flags.



7

After scanning the palatal side, move on to scanning the buccal side, still keeping the scanner at a 45-degree angle to the flat surfaces of the flags.



8

After scanning the flags, proceed to the final step. Highlight the area containing the SmartFlags and verify that all reference surfaces have been properly scanned.



done.