

SmartFlag iOS Basics - Scanning Instructions

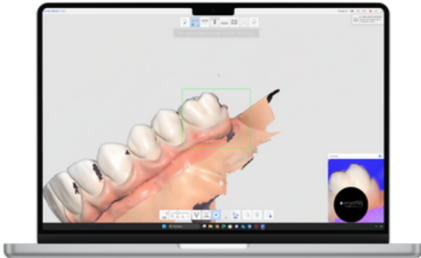
Using SmartFlags with Patient wearing screw retained temporary bridge

1

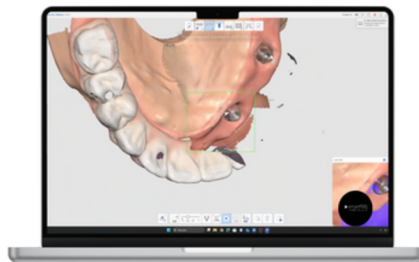
After initiating the scan, add the pre-op and scanbody scan stage to the protocol.

**2**

Scan the maxilla with the screwed-in temporary bridge, scan the mandible, and perform the bite registration. Make sure you have scanned enough reference points.

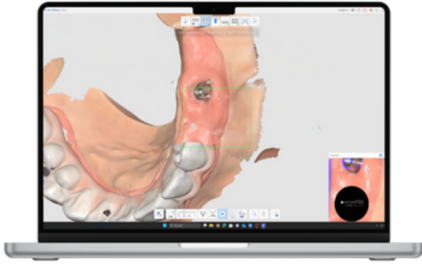
**3**

For the maxilla, scan as much of the palate as possible. If the implants are in the mandible, use special markers. Unscrew the temporary bridge and scan the edentulous ridge of the patient.



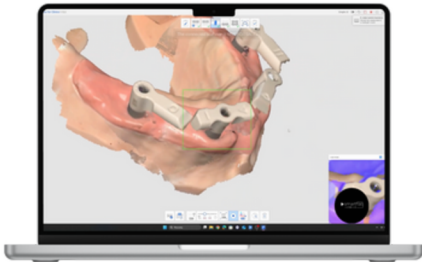
4

You do not need to remove the scanned temporary bridge from the scan; the software will do it for you.



5

Start scanning the SmartFlags from a reference point on the patient's ridge. Scan the SmartFlags in one smooth motion, holding the scanner tip at a 45-degree angle to the flat surface of the flags. Finish the scanning process and double-check that everything has been scanned correctly.



6

If everything is scanned correctly and all the reference surfaces are captured on the SmartFlags, you can send the scan to the dental lab.

