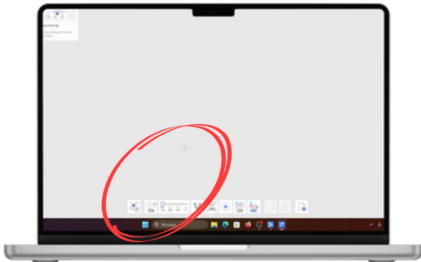


## SmartFlag iOS Basics - Scanning Instructions

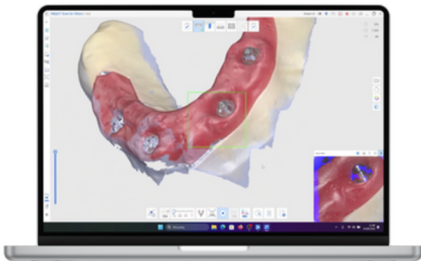
### General rules for scanning the SmartFlags

**1**

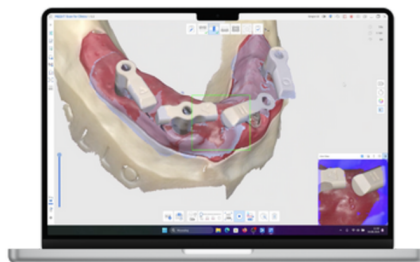
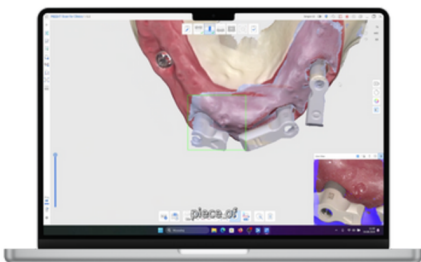
Ensure that filtering is disabled before starting the scan, especially if the arch is completely edentulous.

**2**

Capture as many reference points as possible during the scan. For maxillary scans, include the palate for better accuracy.

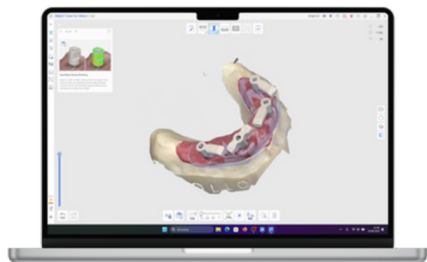
**3**

Switch to the scanbody tool.  
Securely attach the SmartFlags in the patient's mouth.  
Scan each SmartFlag with smooth, continuous movements at a 45-degree angle.  
Rotate the scanner to capture the opposite side of the SmartFlags.

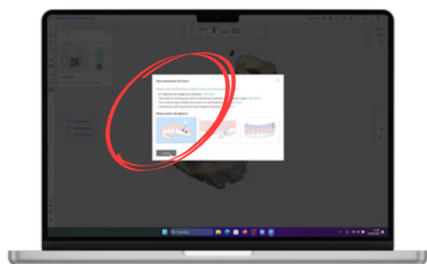


**4**

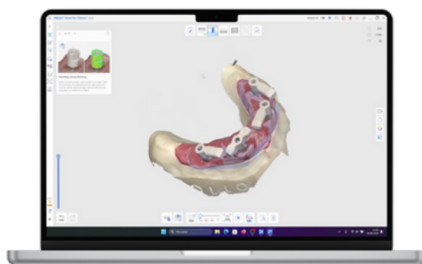
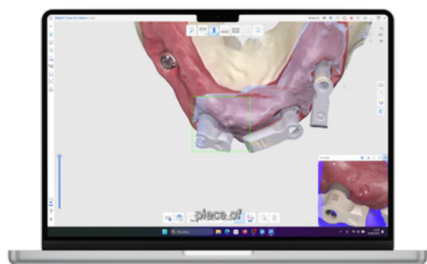
Carefully inspect the scan to confirm that all critical landmarks on the SmartFlags are captured.

**5**

If any part of a SmartFlag is missing, perform a quick, single motion rescan to capture the missing element.  
Once satisfied with the scan, proceed to finalize and recalculate the scan.

**6**

Verify that all SmartFlags have been fully captured and appear accurate.  
For optimal viewing, disable color when reviewing SmartFlags.  
If everything is correct, the scan is ready for the next steps.



done.