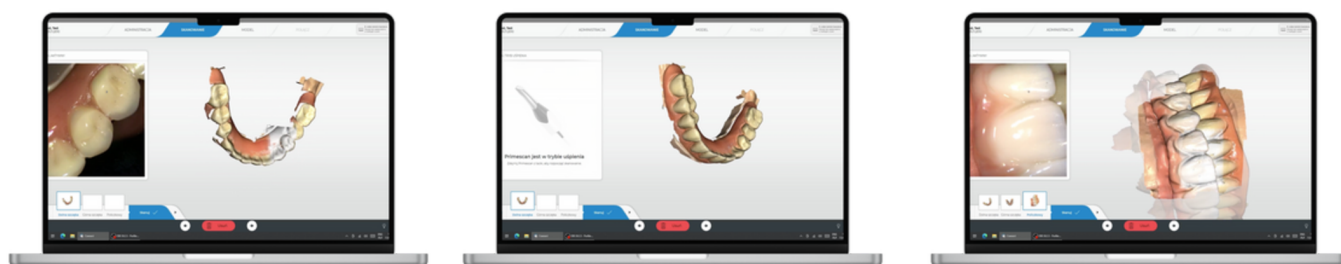


SmartFlag iOS Basics - Scanning Instructions

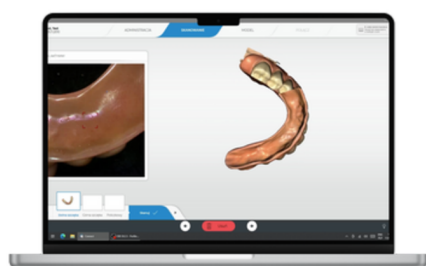
Using SmartFlags with a patient wearing a full denture

1

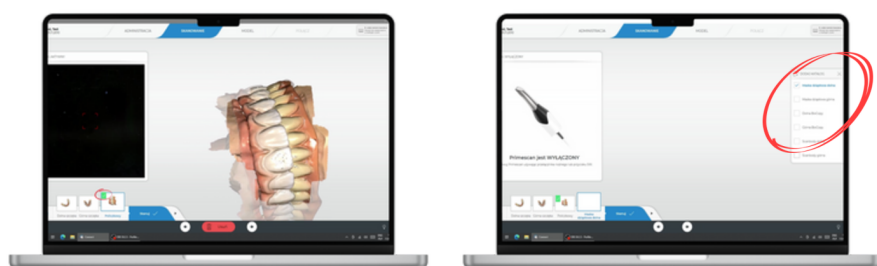
Scan the initial situation of the patient.
Start by scanning the mandible.
Then scan the maxilla and register the bite.

**2**

Scan the patient's denture from every side.
It's important that the mucosal side of the denture has been relined with silicone.

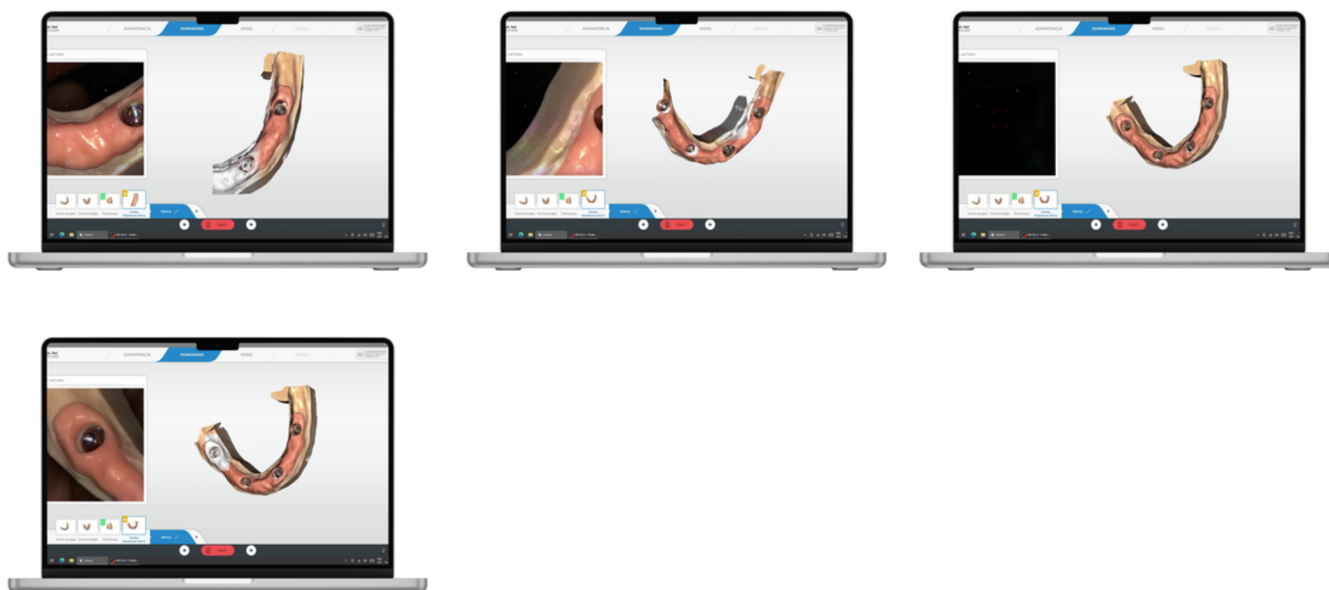
**3**

Continue scanning the bite until you see the green checkmark in the corner of the window.
Add the next stage, which is scanning the gingival mask.

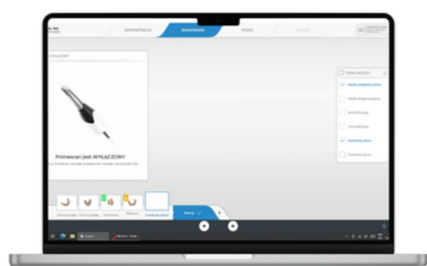


4

Scan the patient's edentulous ridge. If it's the maxilla, also scan the palate. If it's the mandible, try to stabilize any movable tissues during scanning.

**5**

After scanning the soft tissues, add another stage in the scanner – ScanBody scanning.

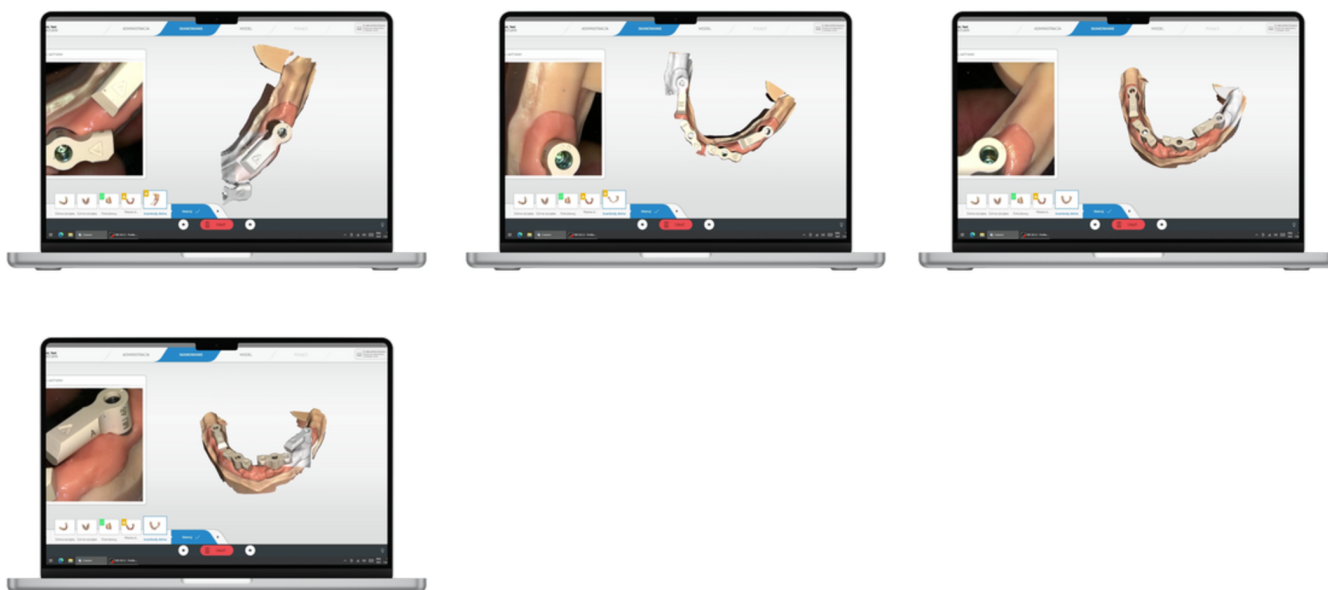
**6**

In the patient's mouth, attach the smart flags according to all the rules that apply when using SmartFlags.

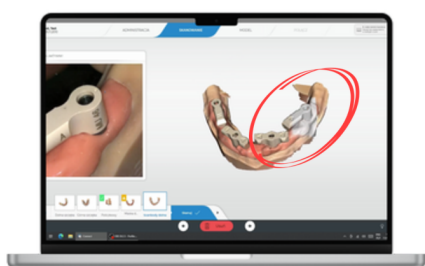


7

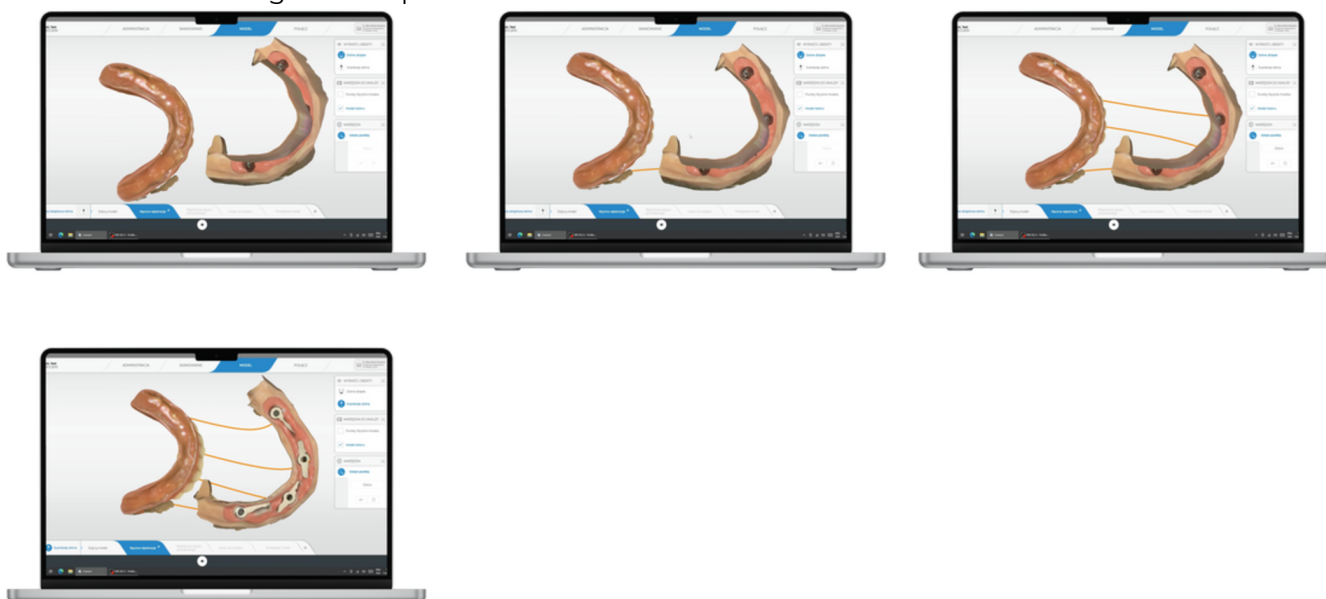
Scan the SmartFlags by positioning the scanner at a 45-degree angle to the flat surface of the flag.

**8**

First, scan the entire lingual or palatal surface, then rotate the scanner to the buccal surface and scan it in one smooth motion, also at a 45-degree angle.

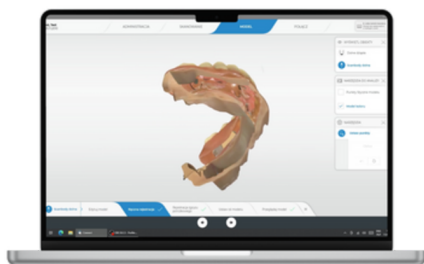
**9**

Try not to go back over previously scanned surfaces. If the program is unable to automatically align all the scans, use the manual alignment option.

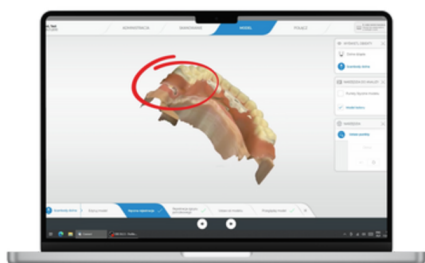


10

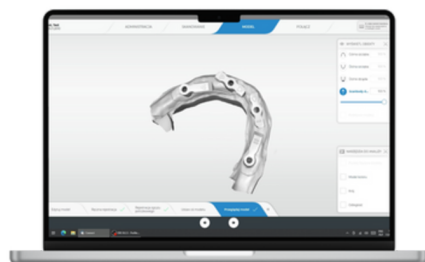
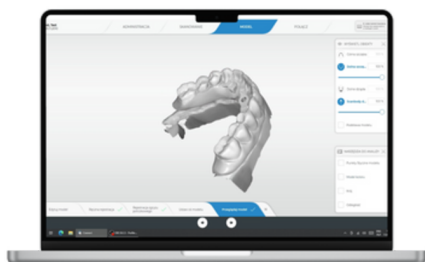
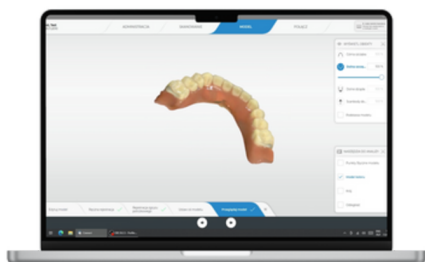
Check if the program has aligned the scans correctly.

**11**

If you notice that the scans have not been aligned, make sure to inform your dental technician, he will need to redo it in his CAD software.

**12**

Finally, ensure that everything has been scanned correctly. If everything is in order, complete the scan.



done.