

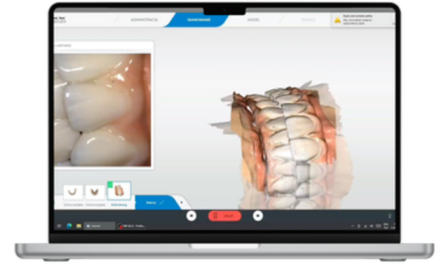
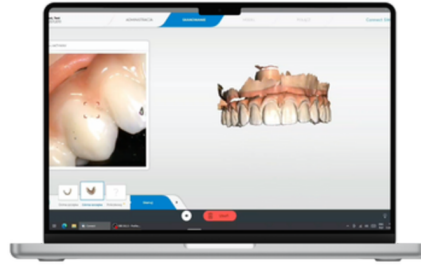
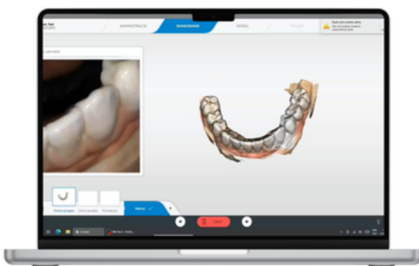
## SmartFlag iOS Basics - Scanning Instructions

# Using SmartFlags with Patient wearing screw retained temporary bridge

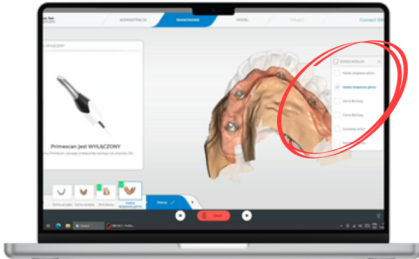
**1**

Scan the initial situation of the Patient.

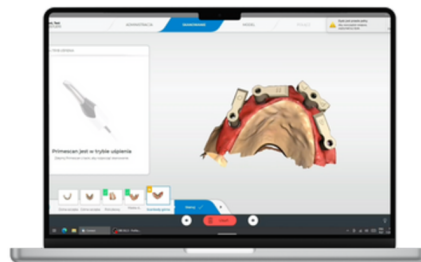
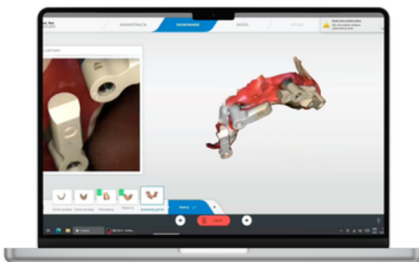
Start by scanning the mandible, then scan the maxilla, and register the bite.

**2**

Unscrew the temporary case in the Patient's mouth, and on the scanner, add an additional stage – gum tissue scanning.

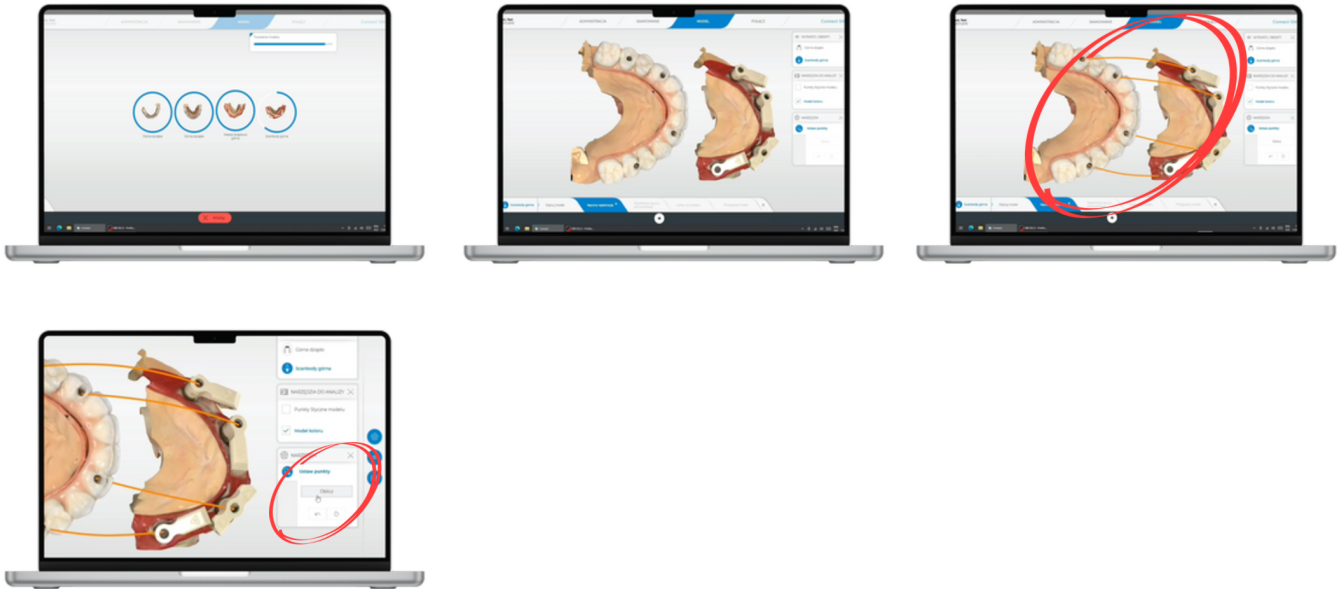
**3**

After scanning the soft tissues, add another stage in the scanner – scanbody SmartFlags scanning. In the patient's mouth, attach the SmartFlags according to all the rules that apply when using SmartFlags.

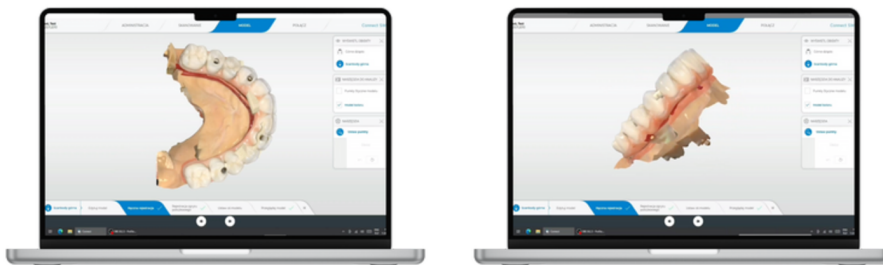


**4**

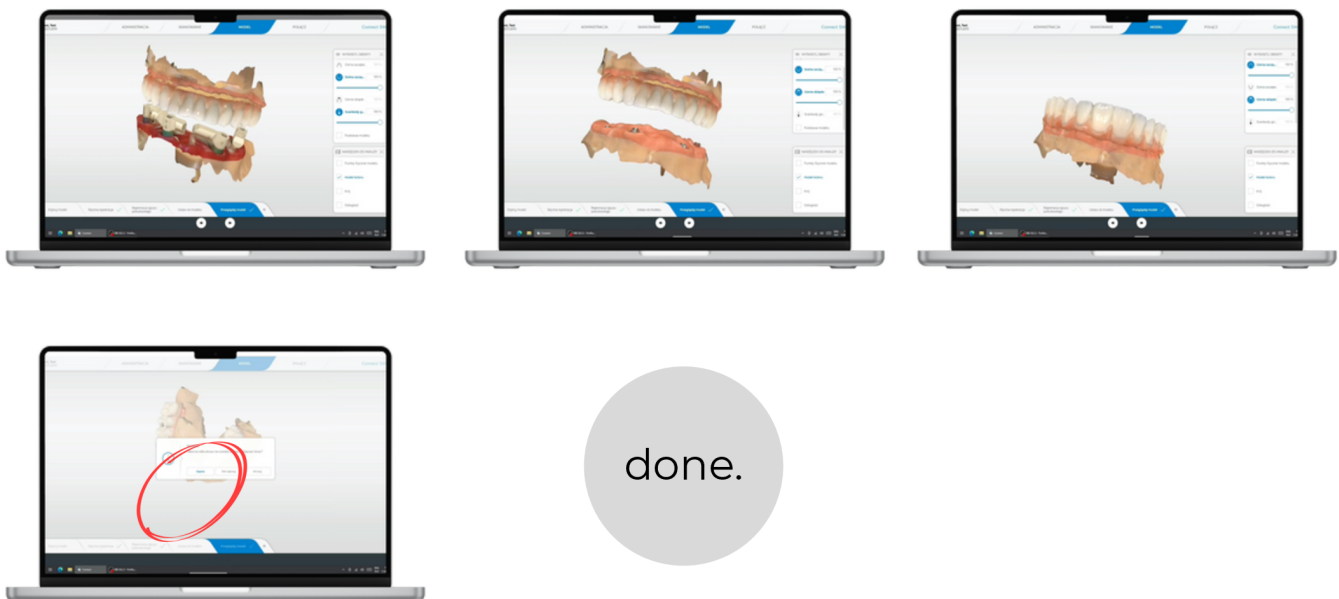
If the program is unable to automatically align all the scans, use the manual alignment option.

**5**

Finally, ensure that everything has been scanned correctly.

**6**

If everything is in order, complete the scan.



done.