

SmartFlag iOS Basics - **placements** & scanning tips

Correct **SmartFlag** placement:

You can use the full capabilities of your scanner for all-on-x implant cases

- 

1 **Choose the type of SmartFlag depending on the clinical conditions**
(1 or 2 wings) – match their type to the space between the implants
- 

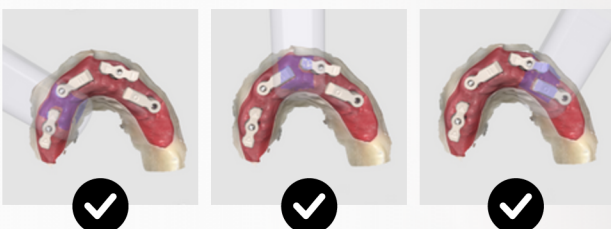
2 **Always use SmartFlag with different symbols**
on a **flat reference surface**, pay special attention to this when using different implant platforms or different implant systems
- 

3 **Place SmartFlag along the alveolar ridge**
if clinical conditions allow
- 

4 **Place SmartFlag so that they do not touch each other**
(while maintaining the smallest distance between SmartFlag) – check with **dental floss** whether the appropriate distances are maintained – the floss should loosely pass between SmartFlag
- 

5 **Tighten the SmartFlag using a screwdriver**
dedicated to the implant system used – screwing force recommended by the implant manufacturer

Examples of SmartFlag placement:




SmartFlag iOS Basics - placements & scanning tips

SmartFlag scanning


The unique shape with a large reference surface of the SmartFlag by APOLLO solid, ensures a smooth scanning process, giving confidence in reproducing the implant position.

- 1




Start with a scan of the full arch with SmartFlag.

Do a smooth motion so that they are all scanned, and return by scanning with a sweeping motion
- 2




Scanner tip

cannot touch the SmartFlag
- 3



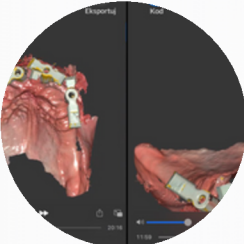
Maintain a balanced scan rate

and do not lose the SmartFlag view from scanner registration field
- 4



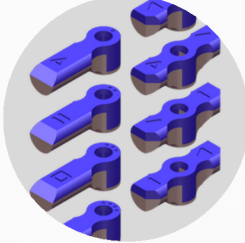
Pay extra attention

(when switching from one SmartFlag to another – make sure that the scanner tip covered both SmartFlag in the registration field at the same time)
- 5



If the scanning process is interrupted or stopped

start the process again from the place with the registered characteristic surface.
- 6



Remember to register all SmartFlag reference surfaces

during the scanning process