



Are you ready for  
Game-changing  
technology?

IOS full digital solution for all-on-x with open production library.

## Compatibility with Implant Systems and Scanners

SmartFlag can be used  
with several implant systems.  
The compatibility chart  
is regularly updated on our  
website.

Current list of systems  
and validated scanners



## Scanbody SmartFlag by APOLLO

It is the latest project of APOLLO IMPLANT COMPONENTS  
in the form of the most modern digital scanbody,  
dedicated to the implementation of all-on-x cases  
in the full-digital protocol, co-created with the opinion  
leaders of European implant prosthetics.





## 01 Independence

Open production libraries. Complete your cases in the chosen laboratory

## 02 Precision of scanning

Provided by the geometry of the shape and marks.

## 03 Predictability

For the most complicated cases.

## 04 Passivity

High precision of cases based on intraoral scans.

## 05 Smart Components

Full Digital Workflow - Smart & Predictable.

## 06 Continuity of scanning

Smooth image registering with a standard scanner.

## 07 Time-saving

Workflow completed in 2-3 visits.

## 08 Durability

Up to 100 sterilization cycles.

## 09 Quality of materials

Medical peek eliminates reflections, and titanium alloy Ti6Al4V ELI (grade 23) ensures a tight connection with the implant.

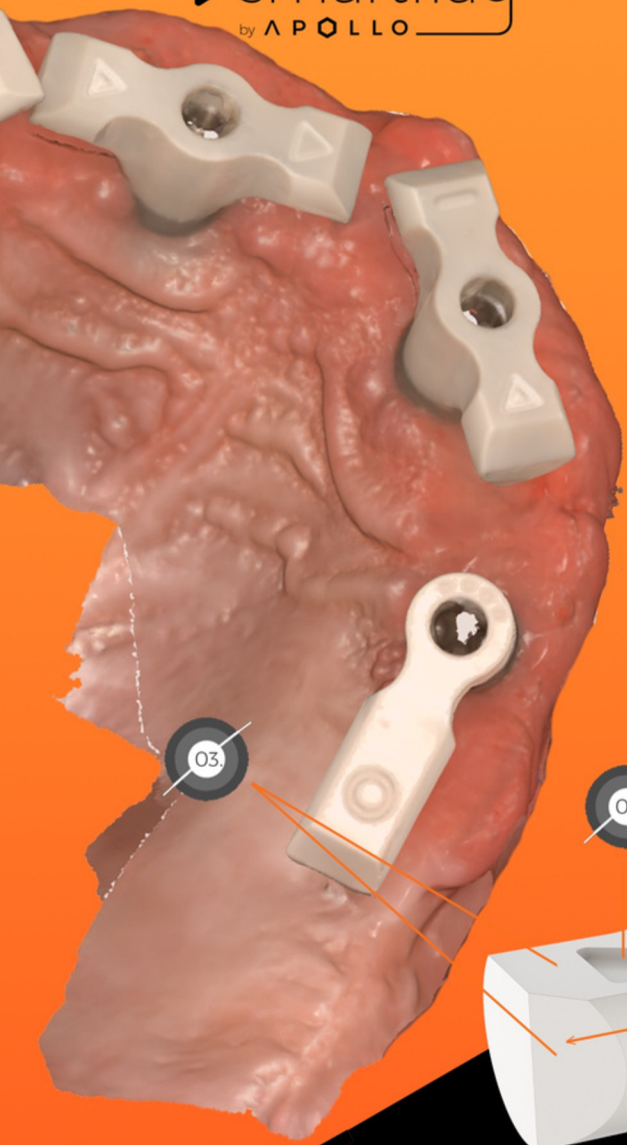
## 10 Clear identification

of compatible implant systems and their platforms.

Discover the revolution  
in the scanning process







01 Various shapes of smartflags of different lengths and spans

02 Optimal height of SmartFlag

03 Characteristic geometry and large reference surface (flat)

04 Unique marks on each scanbody

05 Clear marking of the implant system

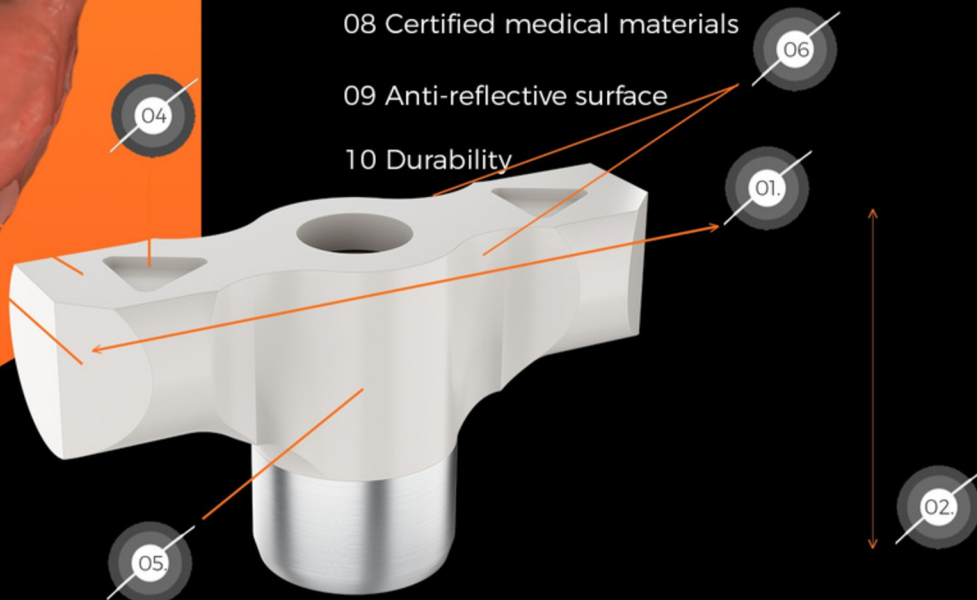
06 The implant axis shown by the side indentation

07 Precision of sealing the connection with the implant

08 Certified medical materials

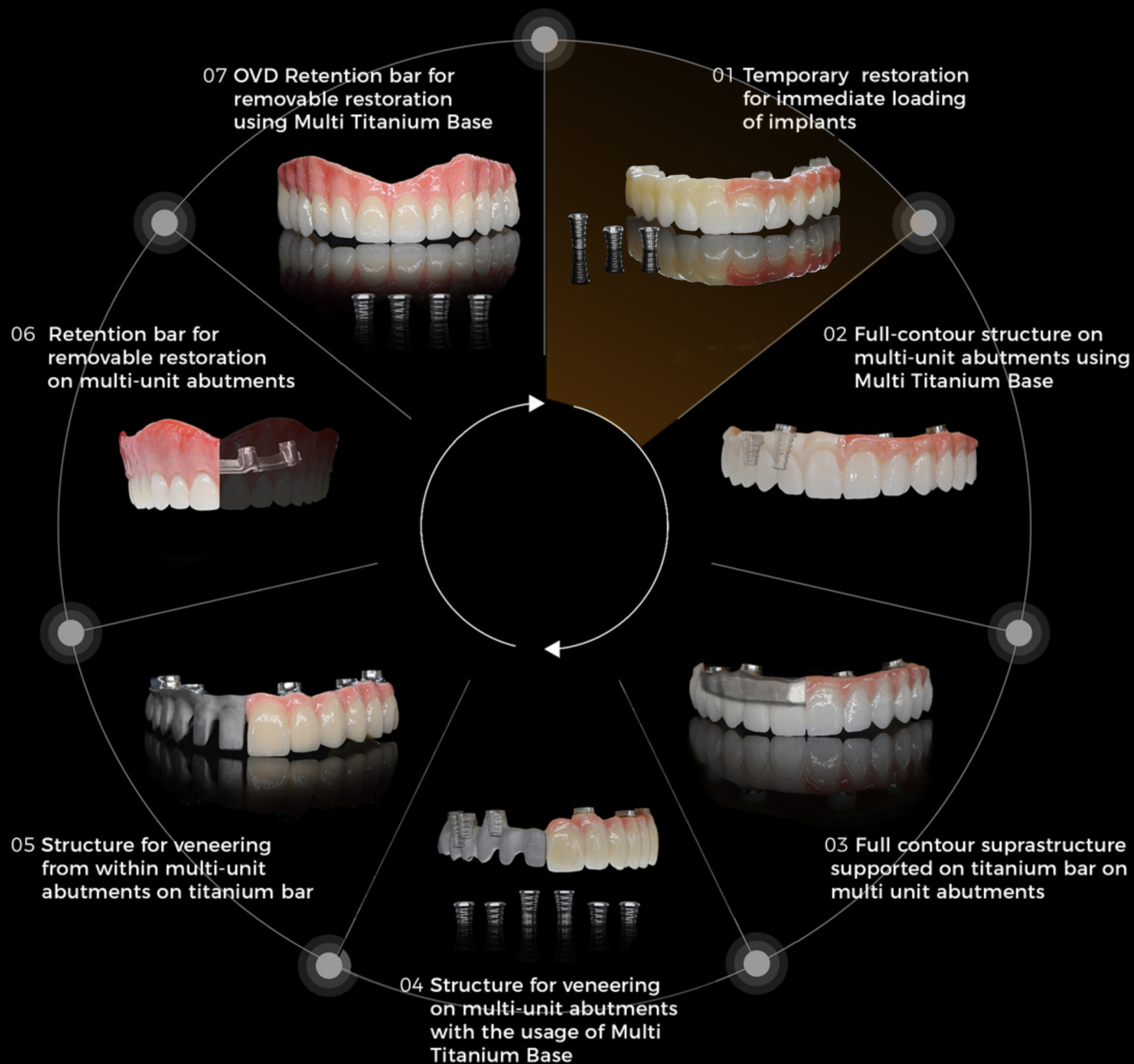
09 Anti-reflective surface

10 Durability

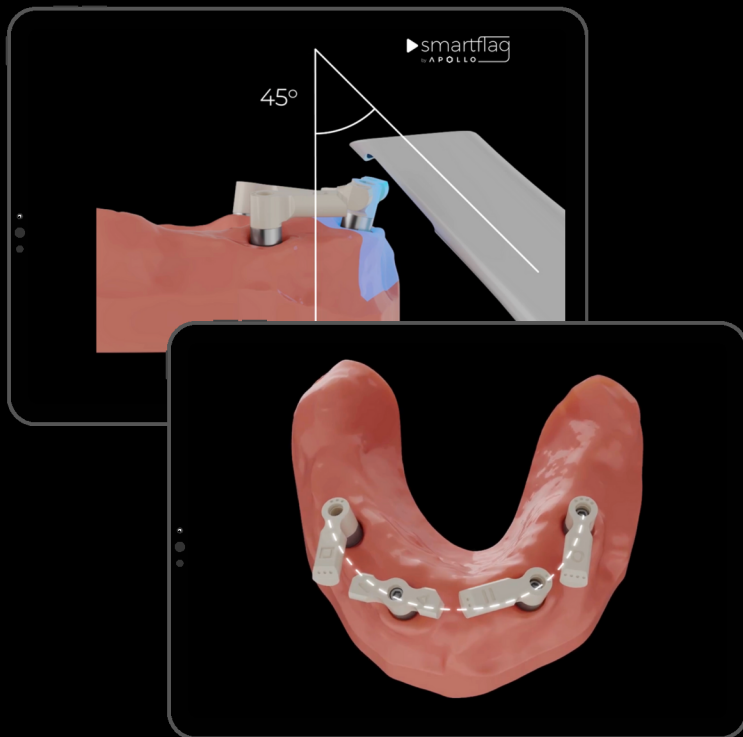




## Smart Digital Workflow for any type of all-on-x restoration



## SmartFlag Placements & Scanning Procedure



Watch the full video on our website.  
SmartFlag Placements & Scanning Procedure



## APOLLO Smart components



**Multi  
Titanium  
Base**  
Titanium base  
including screw



**Multi  
Titanium  
Base  
multiSHIFT36°**  
Titanium base with  
angulated screw channel  
up to 36°  
including screw



**One Lock  
Digital Analog**  
Digital analog



## SmartFlag in the eyes of Key Opinion Leaders

Check why professionals choose SmartFlag.



## SmartFlag by APOLLO

This is the company's latest project in the form of newest digital scanbodies, dedicated to the implementation of all-on-x works in a full digital protocol, co-created with the opinion leaders of European implant prosthetics.

APOLLO IMPLANT COMPONENTS guarantees the quality of its products in accordance with the conformity assessment procedure specified in the MDR Regulation 2017/745 and the implemented Quality Management System EN 13485:2016 certified by the notified unit TUV Rheinland.

### Certificates

✓ ISO 13485:2016

✓ CE 0197





Open Production Libraries,  
Discover unlimited access and independence in choosing  
the milling centers and laboratories to work with.  
**Game-changing technology.**

## What is included in our kit?



Sales department  
[smartflag@apollocomponents.eu](mailto:smartflag@apollocomponents.eu)



### Contact details

Sales department  
+48 882 878 707

Support  
+48 42 225 29 29

Konopna 16  
95-200 Pabianice  
POLAND

### Certificates

✓ ISO 13485:2016

✓ CE 0197